

CKM® Word

For your eyes only

CKM Word is based on TecSec's patented, standards-based Constructive Key Management® (CKM®) encryption technology.

Using CKM Word, you can encrypt all of the text in a document, a paragraph, a word or even just a letter. Or, you can encrypt graphic images, media files...virtually anything you can insert in a document *and* it doesn't affect your existing styles or formatting.

CKM Word allows you to encrypt portions of the same document using different "permissions" (called Credentials) so that only those with a "need to know" can access the information they are intended to see.

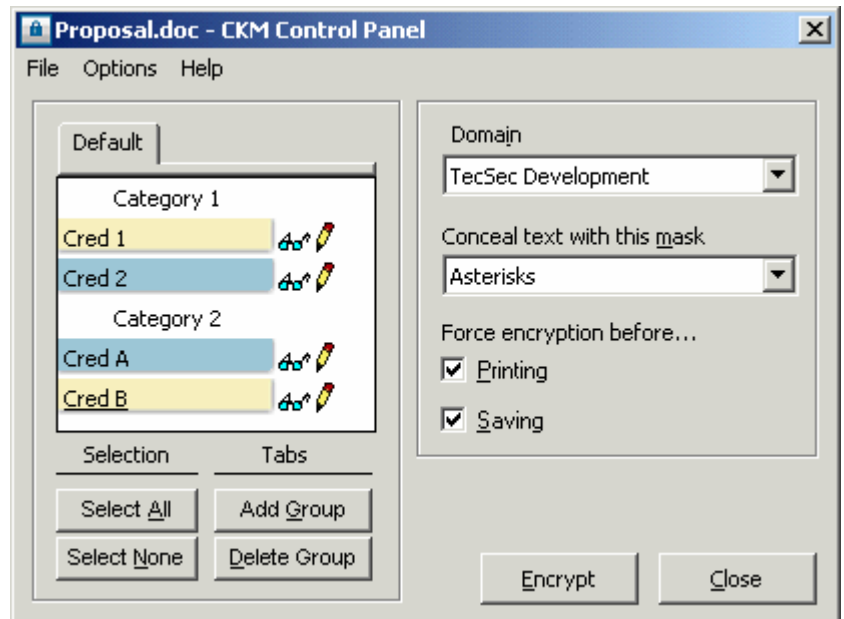
CKM Word also allows you to encrypt an entire paragraph with one set of Credentials and then encrypt a subset of that same paragraph using a different set of Credentials - giving you object-within-an-object encryption.

These Credentials are defined by your organization's top level administrator and can be tailored to mirror the existing hierarchy and flow of information within your organization using TecSec's CKM administration tools (see the CKM Enterprise Builder or CKM Admin Lite Product Sheet).

TecSec®, Incorporated

1953 Gallows Road Suite 220
Vienna, Virginia 22182 USA

Tel: 703 744 8400
Fax: 703 506 1484
Email: sales@tecsec.com
Web: www.tecsec.com



CKM Word Features

- Role Based Access Control to information
- Object-within-an-object encryption
- Persistent protection of information
- Intuitive and user-friendly encryption/decryption process
- Token friendly and flexible

About TecSec®, Incorporated

TecSec, Incorporated is a privately held company located in Northern Virginia's technology corridor. Founded in 1990, TecSec's focus is on Information Security and Information Access Management - enforced through cryptography. For additional information on TecSec products and solutions, visit our website at www.tecsec.com.

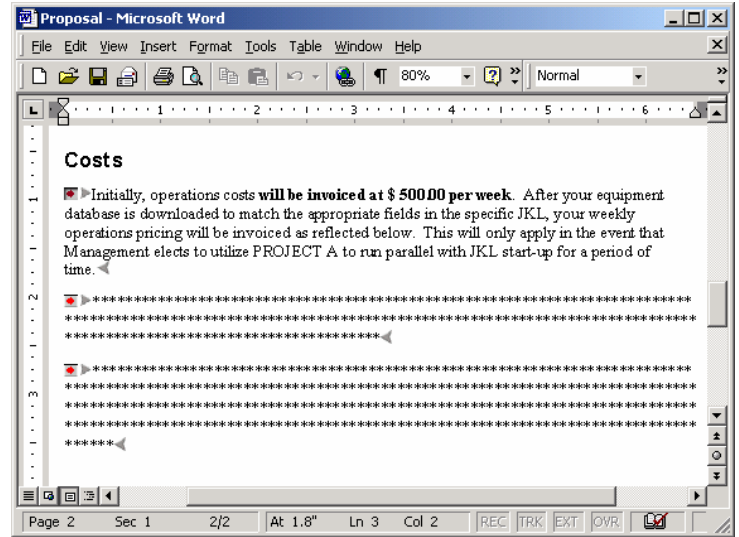


CKM Word real-world example: one document - three different access levels

Example 1:

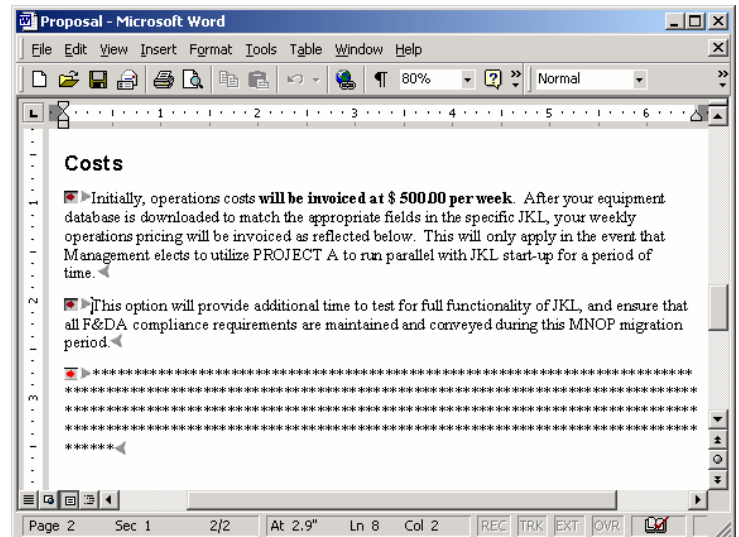
If you hold the "Employee" Credential, you can only decrypt and read one section of this protected document.

As an option, the "owner" of the information may also choose to completely hide encrypted sections with Credentials another user doesn't have.



Example 2:

If you hold the "Management" Credential, you can see more of the document, but not as much as someone who holds an "Executive" Credential.



Example 3:

If you hold the "Executive" Credential, you have access to all encrypted portions of this document.

