

# CKM® Mail *for Microsoft® Outlook®*

CKM Mail is based on TecSec's patented, standards-based Constructive Key Management® (CKM®) technology.

CKM Mail is a plug-in for Microsoft® Outlook® that enables you to protect your sensitive E-mail correspondence, both while in transit and at rest.

CKM Mail decrypts an incoming message when it is opened if the recipient has the proper permissions, called Credentials, to access it. If he does not, then the message remains indecipherable.

No matter where the E-mail goes, the information in the message is only available to those who have the right Credentials. If a message is sent to the wrong person by accident or is intercepted by an unauthorized third party, that message is still secure.

## TecSec®, Incorporated

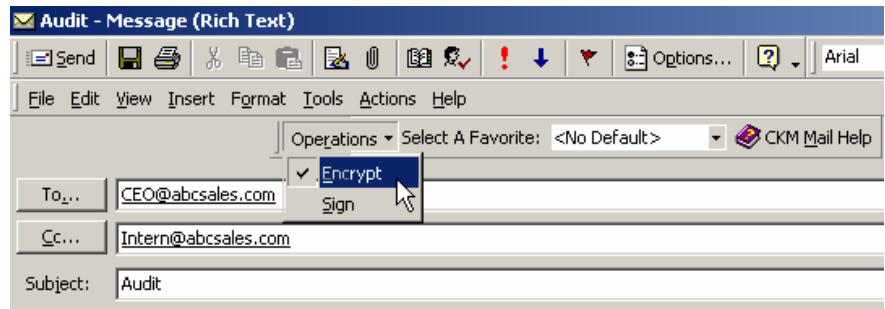
1953 Gallows Road Suite 220  
Vienna, Virginia 22182 USA

Tel: 703 744 8400

Fax: 703 506 1484

Email: [sales@tecsec.com](mailto:sales@tecsec.com)

Web: [www.tecsec.com](http://www.tecsec.com)



CEO:

The Auditors will be here at 9:00 AM Monday. I'd like to schedule a meeting this week to discuss the following items pertinent to the audit:

## CKM Mail Features

- Provides Role Based Access Control to information
- Integrates seamlessly into Microsoft Outlook
- Provides the ability to digitally sign your messages using the Certificates loaded onto your CKM Token
- Verifies the digital signatures of incoming messages and their attachments
- Uses Credentials stored on your CKM Token to set up different groups, or Favorites, to which you frequently need to send sensitive information in an E-mail
- Offers an intuitive and user-friendly encryption/decryption process
- Encrypts the body of your E-mail messages as well as any attachments
- Decrypts your messages when they are opened, provided you have the appropriate Credentials

## About TecSec®, Incorporated

TecSec, Incorporated is a privately held company located in Northern Virginia's technology corridor. Founded in 1990, TecSec's focus is on Information Security and Information Access Management - enforced through cryptography. For additional information on TecSec products and solutions, visit our website at [www.tecsec.com](http://www.tecsec.com).



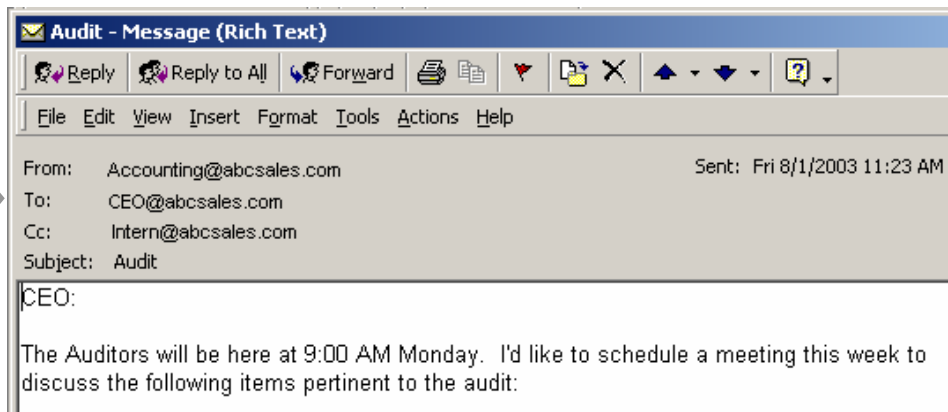
# CKM Mail Example:

*Decrypting a message in Microsoft Outlook*

Accounting@abcsales.com sends an E-mail message that has been encrypted using CKM Mail.

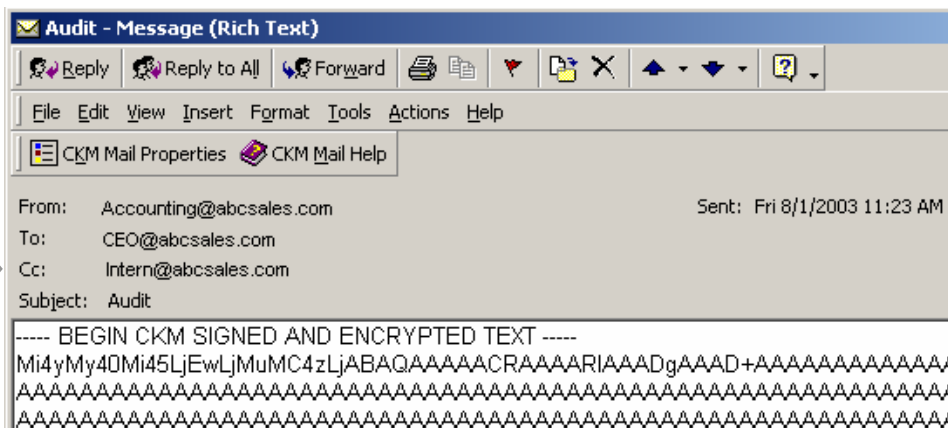
## The Intended Recipient

Because she has the proper Credentials on her CKM Token, CEO@abcsales.com has immediate access to the information contained in the message as soon as she opens it.



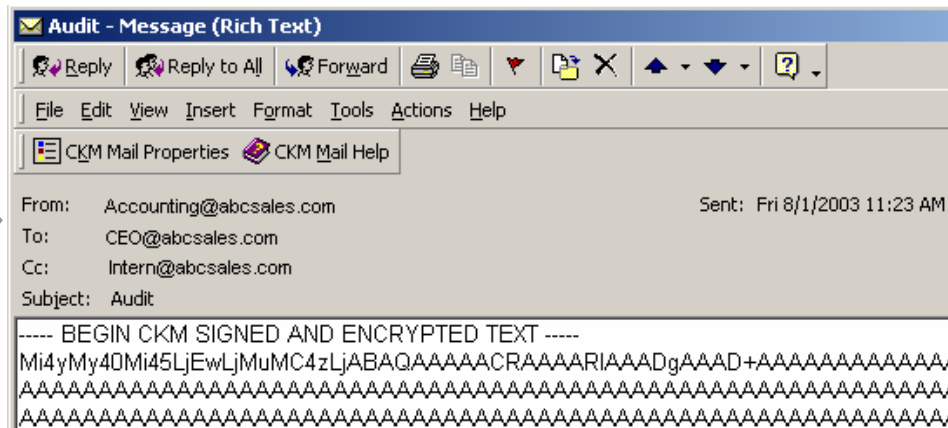
## The Accidental Recipient

The message was accidentally sent to Intern@abcsales.com. Because he does not have the proper Credentials, he is unable to read the message.



## The Unintended Recipient

The message was intercepted by BadGuy@stolenemail.com. He is unable to access any of the information contained in the encrypted message.



No matter where the E-mail goes, the information in the message is only available to those who have the proper Credentials to access it.